



# PROBLEM SOLVED™ PAPER

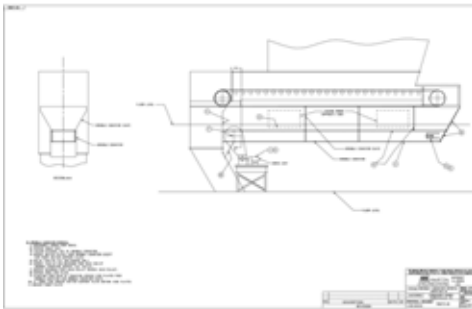
**SOLUTION:** MartinPLUS® Service Technicians (MSTs), Martin® QC1™ Cleaner XHD and Martin® QC2™ Cleaner, Martin® Inspection Doors

**INDUSTRY:** Coal-Fired Power

**LOCATION:** Consumers Energy, D.E. Karn Plant  
Essexville, (outside Saginaw) Michigan



*Consumers Energy D.E. Karn plant outside Saginaw, Michigan.*



*Drawings supplied by Martin Engineering provided a detailed procedure to remove the drag conveyor.*



*Belt cleaners from Martin Engineering are installed in the new dribble chute at the Consumers Energy D.E. Karn Plant.*

## PROBLEM

The drag chain conveyor under a slow moving 60-inch (1524 mm) feed conveyor was inoperable. The Engineered Projects Group of Martin Engineering was called in to engineer the existing system's tear-out and design a new dribble chute with the installation of Martin® Belt Cleaners.

## SOLUTION

MartinPLUS® Service Technicians (MSTs)

Martin Engineering prepared and sent to Consumers Energy detailed drawings with a step-by-step procedure for removal of the drag chain conveyor. Following removal and then construction of a new dribble chute by a local contractor, Martin Engineering's regional MartinPLUS® Service Technician installed a new belt cleaners composed of a Martin® QC1™ Cleaner XHD and Martin® QC2™ Cleaner with Martin® Inspection Doors.

## RESULTS

The new belt cleaning system works in combination with the new dribble chute to remove carryback and return material to the main material stream.

MARTIN® QC1™ Cleaners are protected by U.S. Patent No. 4,917,231.

MARTIN® QC2™ Cleaner is protected by U.S. Patent No. 6,321,901.

MARTIN® Inspection Doors are protected by U.S. Patent No. 5,704,167.

**Martin Engineering • One Martin Place • Neponset, IL 61345-9766 USA**  
**Ph. 800-544-2947 • Fx. 800-814-1553 • [info@martin-eng.com](mailto:info@martin-eng.com) • [www.martin-eng.com](http://www.martin-eng.com)**

**Form P1127**